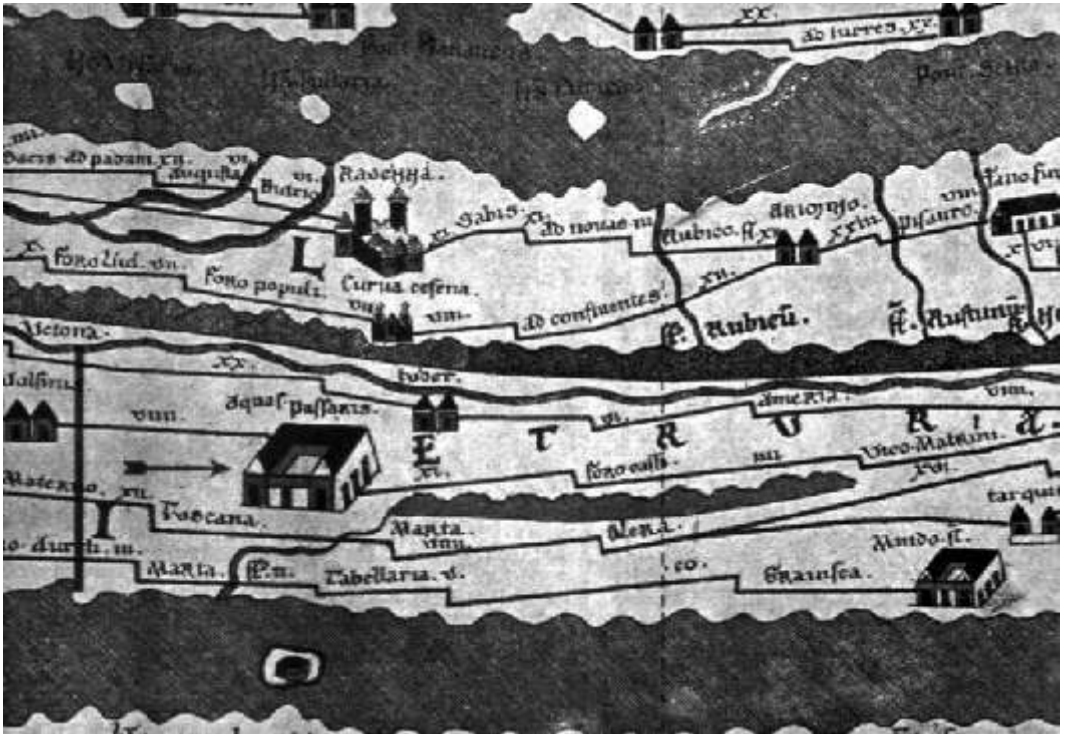


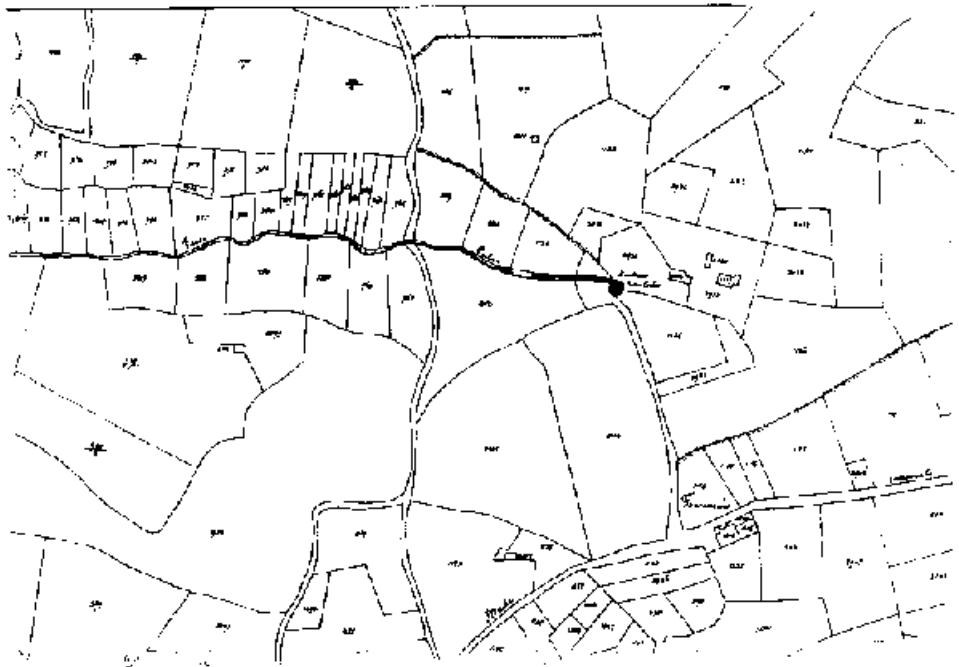
Documentazione grafica e iconografica



Tabula Peutingeriana, III sec. D.C. c. (L.Rossi Danielli, Gli Etruschi del Viterbese, Tav. I, Viterbo 1959)



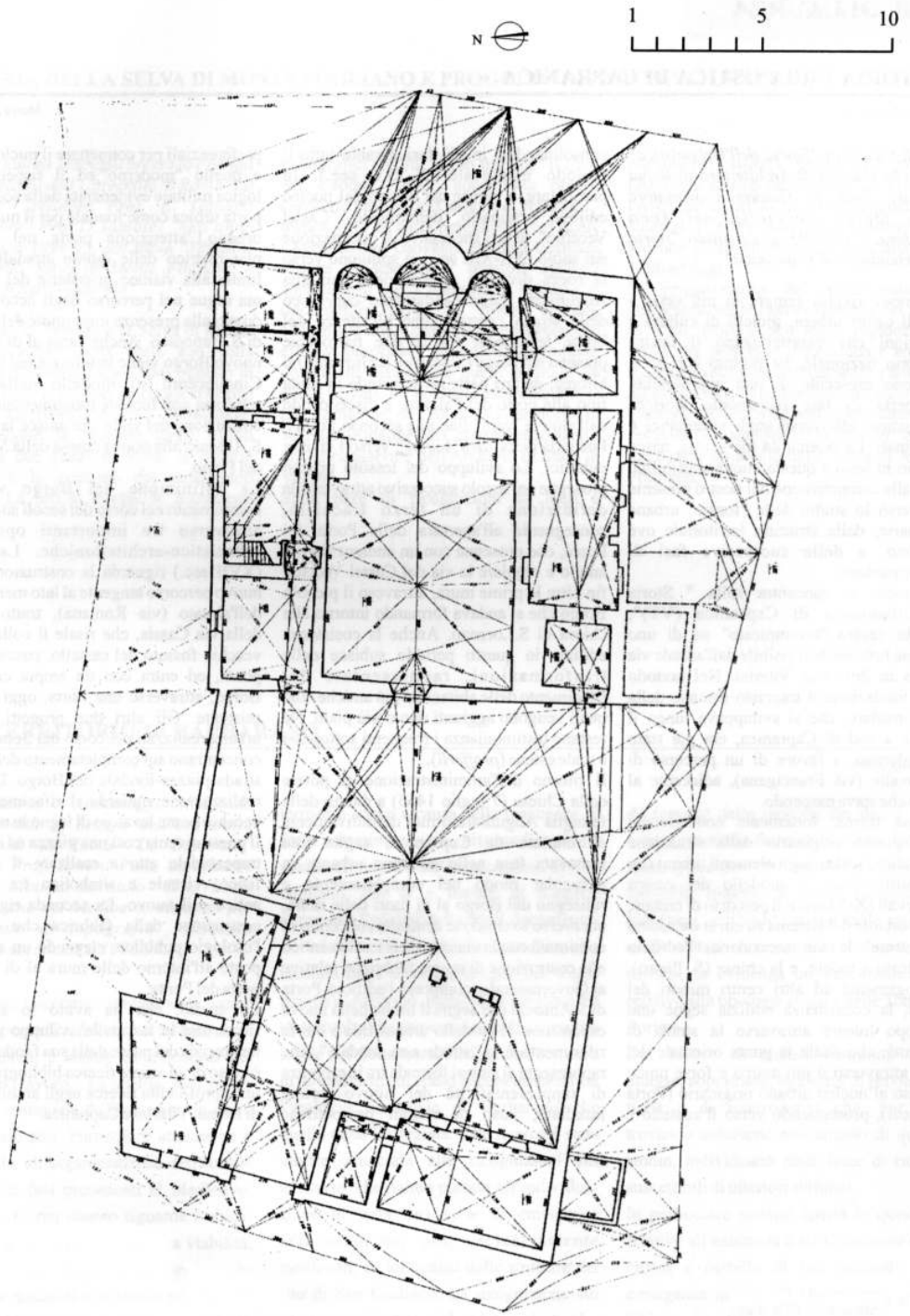
Anonimo, sec. XVI c. (A. Pietro Frutaz, Le carte del Lazio, Tav. 35, Roma, 1972)



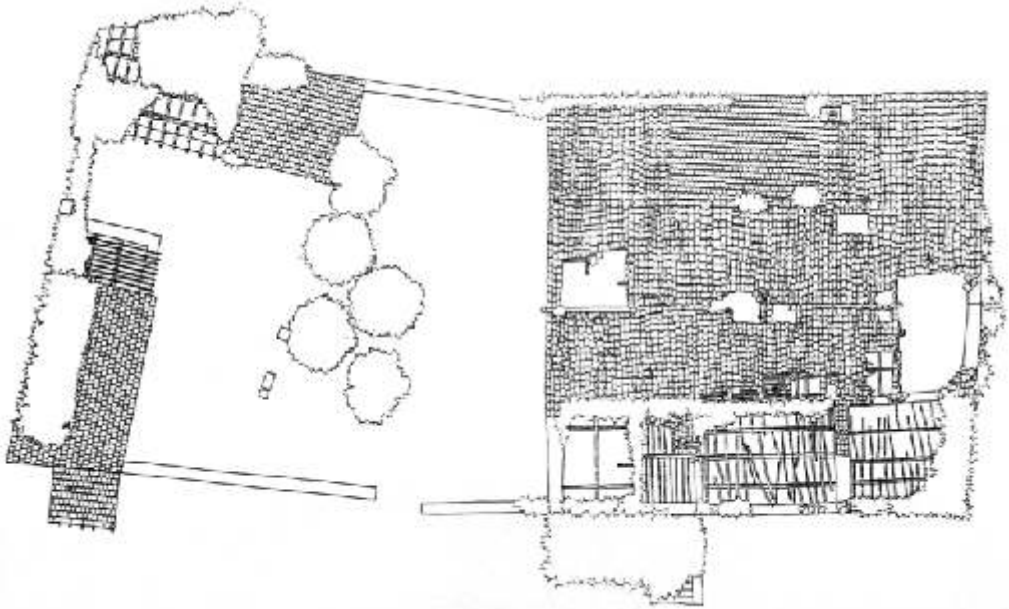
Localita' Foro Cassio, Catasto Gregoriano, Vetralla 1818



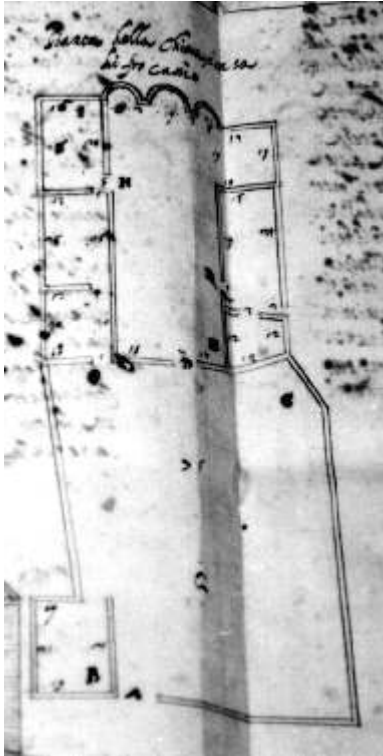
Localita' Foro Cassio, Pianta catastale attuale, ff. 13-14-21-24



S. Maria di Foro Cassio, rilievo planimetrico eseguito nel 1995. (E. Perugi)

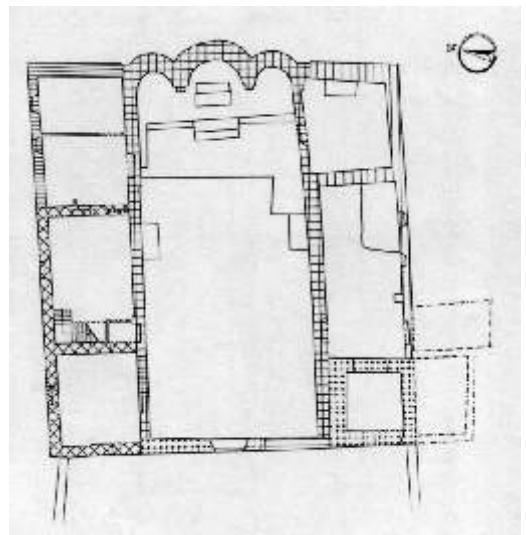


In alto: rilievo architettonico, pianta coperture (E. Perugi).



A sinistra: S.M.O.M., cabreo 192, 1613, ff. 50-51.

In basso: fasi costruttive, (E. Perugi).





Lato sud (particolare), foto E. Perugi, 1993



Lato sud (particolare), 1974