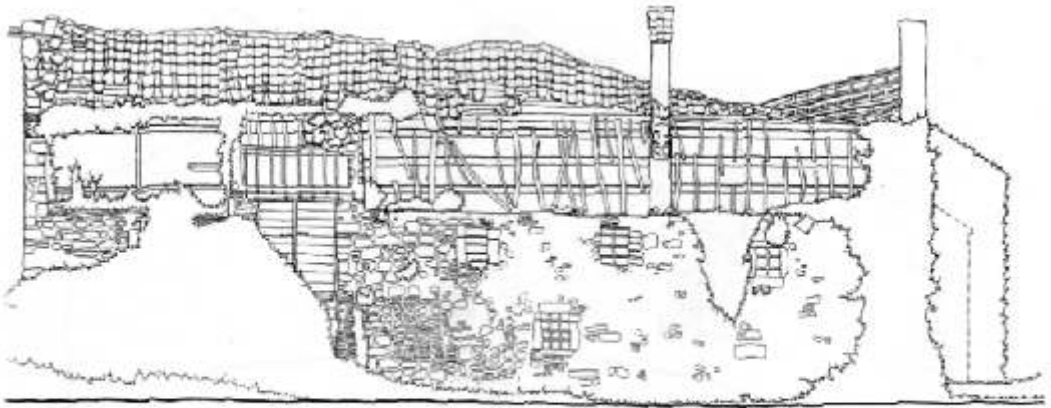


*Rilievo architettonico, prospetto lato nord.*



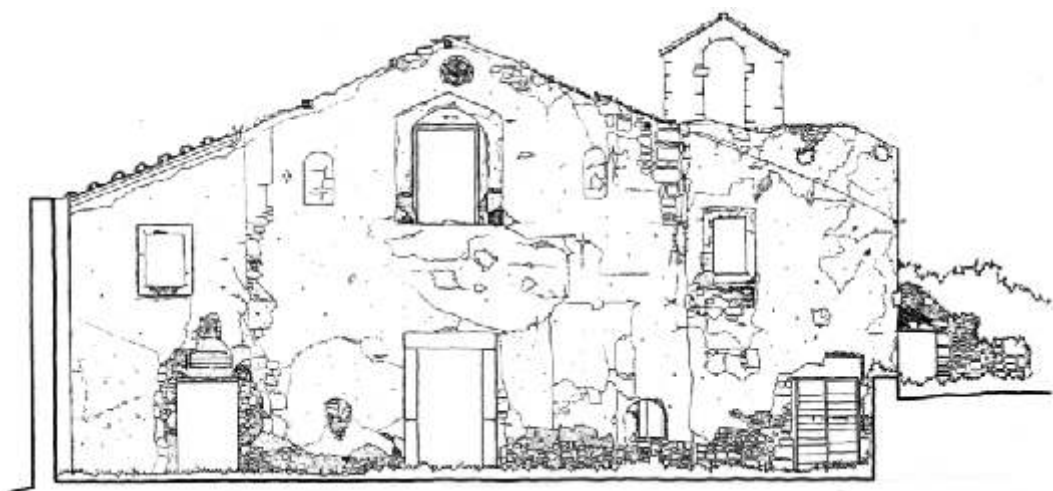
*Rilievo architettonico, prospetto lato sud.*



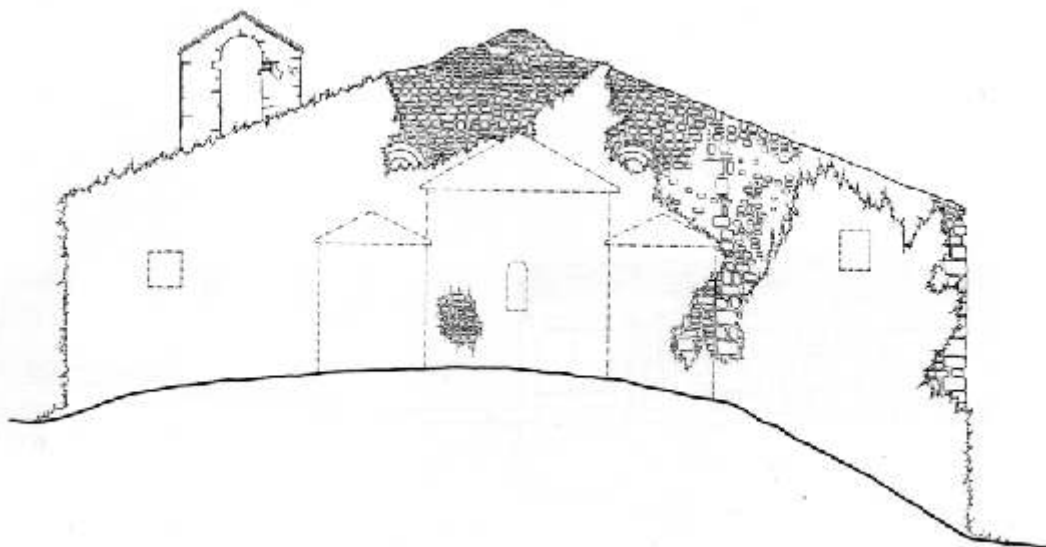
*Facciata, foto D. Camilli, 2001*



*Absidi, foto E. Perugi, 1993*



*Rilievo architettonico, prospetto principale lato ovest.*



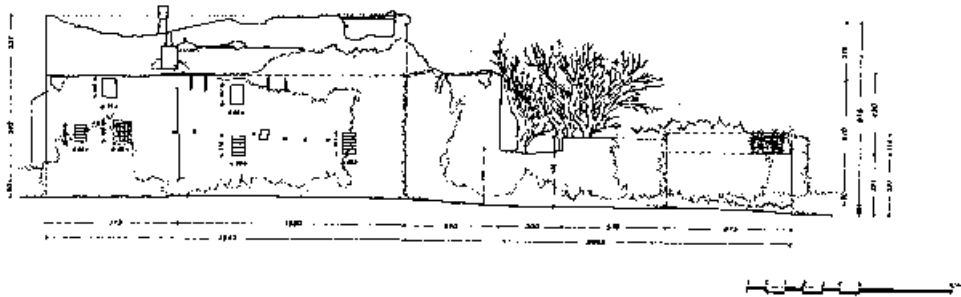
*Rilievo architettonico, prospetto lato est.*



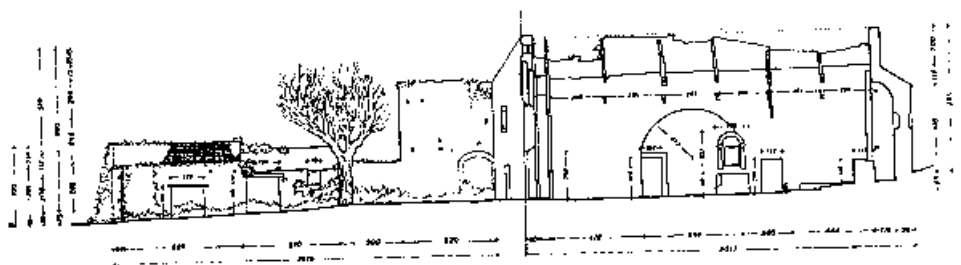
*Lato nord, foto E. Perugi, 1993*



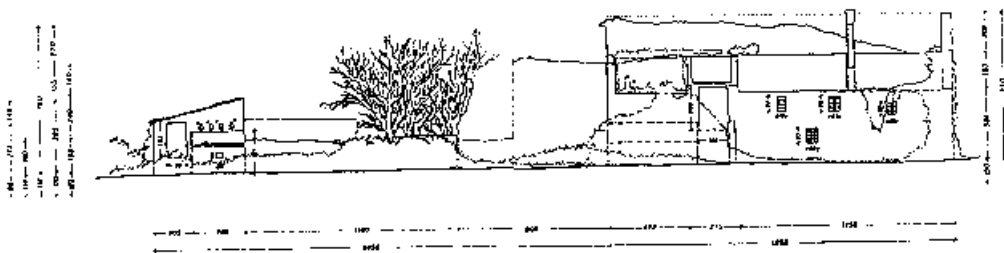
*Lato ovest, foto D. Camilli, 1999*



*Prospetto laterale destro.*



*Prospetto laterale sinistro.*

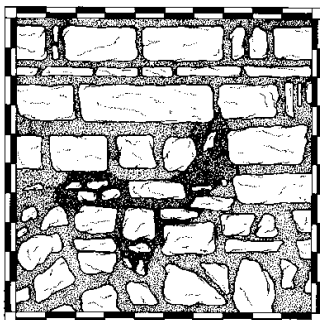


*Prospetto laterale sinistro.*

*Analisi delle murature (E. Perugi): foto e rilievi a contatto.*



*Muro d'ambito sinistro.*



*Muro d'ambito sinistro.*

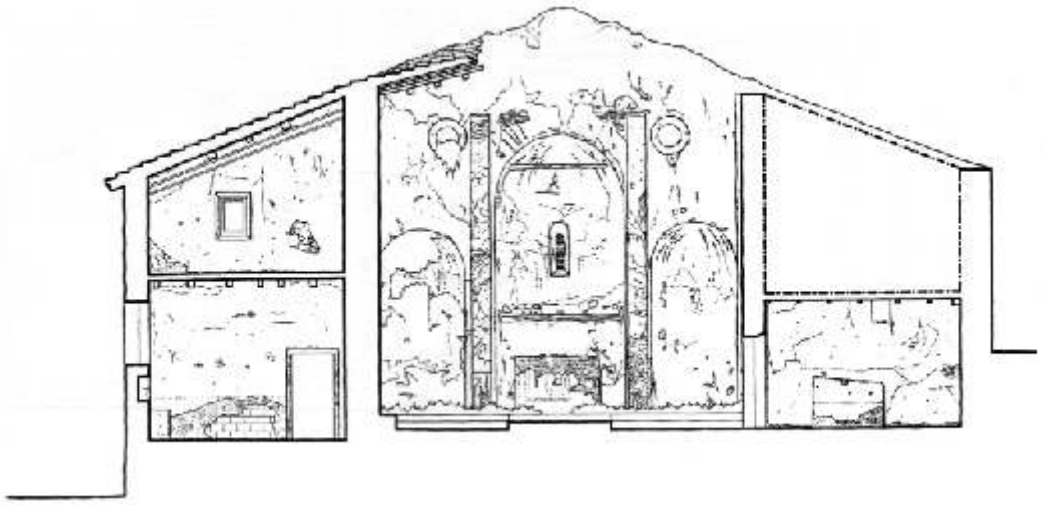


*Prospetto principale.*

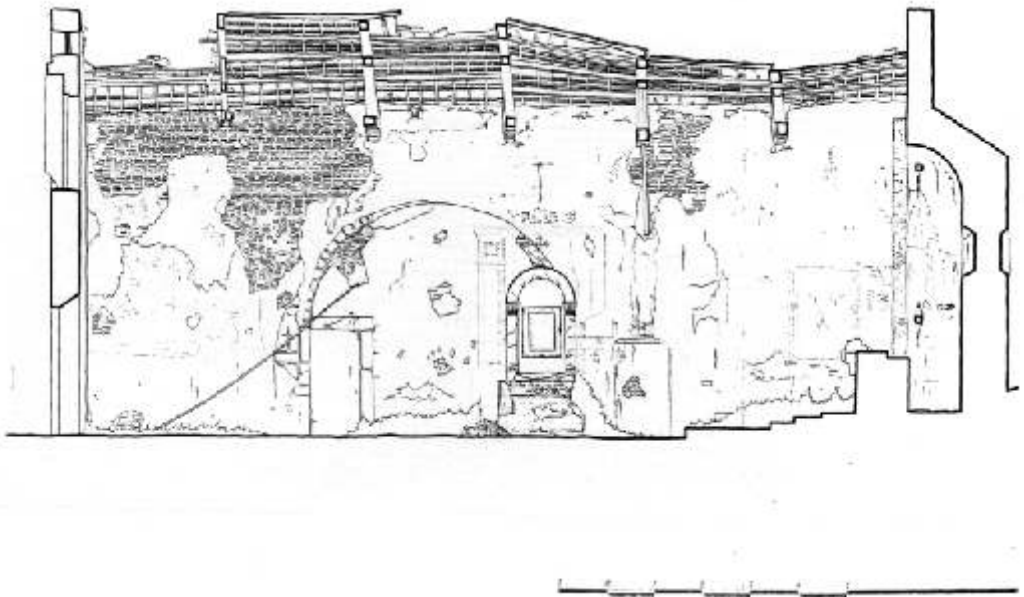


*In alto: interno chiesa, foto F. Mascherucci, 1978.*

*A sinistra: presbiterio, foto E. Perugi, 1993*



*Rilievo architettonico, sezione trasversale.*



*Rilievo architettonico, sezione longitudinale.*





*Mensole di sostegno alle capriate, foto E. Perugi, 1996*



*Mensole di sostegno alle capriate, foto E. Perugi, 1996*